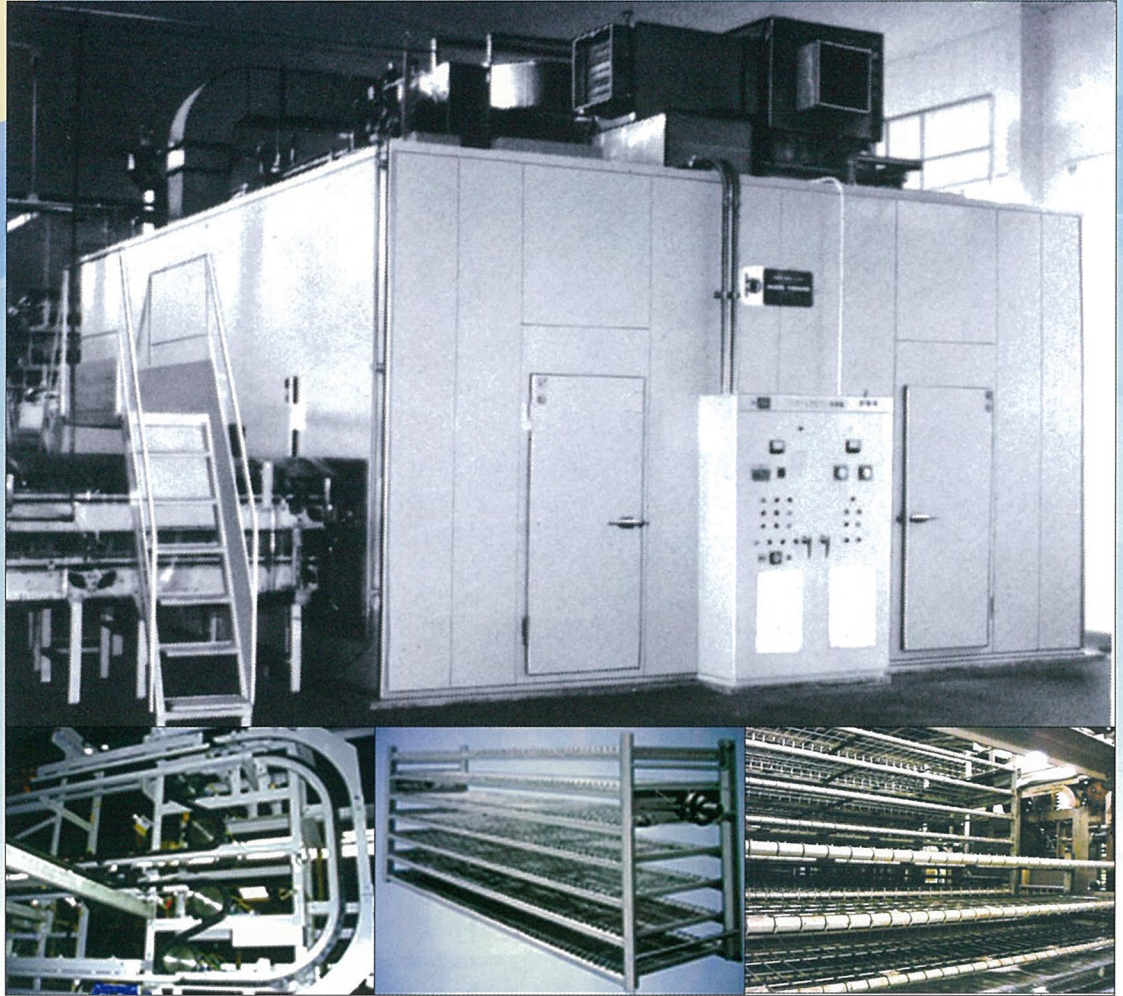




**Baker Perkins**

**MISUZU**

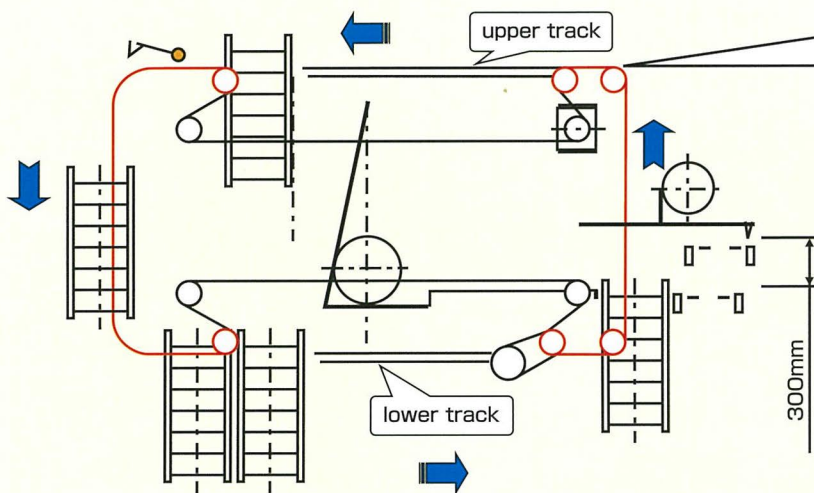
**Upgrade your production line!  
No.1 Premium Final Proofing System in Japan.**



## 932 Rack Final Proofer

- Our sales volume for this type of final proofer is largest in Japan.
  - The dough of bread can be fermented evenly with the air-conditioning system.
  - The machinery design is compact.
  - The energy saving way is designed for machine operation system.
  - The inside volume of rack type proofer is less than 30~35% of that of tray type proofer. Therefore, the energy consuming amount for the air-rotation fan is less, and it is energy saving.
  - The proofing time for the rack type proofer is 60 minutes, and the substantive operation time is only about 20 minutes.
- ※In case of 9 shelves per 1 rack×20 racks.

**Baker Perkins** is a legend of the bakery-confectionery machinery of the world.  
The DNA of the technology MISUZU inherits.



The rack and chain contact each other only during up/down movement. (indicated by the red line in the left drawing)  
When racks move horizontally, they are out of the chain. Therefore, the main chain lasts for a long time.

The space between the charge conveyor and discharge conveyor becomes wider, and it becomes easier to clean.

For white breads ( 7 shelves )						
Number of rack	10	12	14	16	18	20
Length	6,981	7,465	8,151	8,837	9,523	10,209
Width	Width of rack + 2,086					
Height	3,285(excluding height of air-condition(600H))					

For sweet buns ( 9 shelves )						
Number of rack	10	12	14	16	18	20
Length	6,981	7,465	8,151	8,837	9,523	10,209
Width	Width of rack + 2,086					
Height	3,440(excluding height of air-condition(600H))					

## Vertical Processing System



- The vertical type final proofers can be used at the place where the rack type proofer can not be installed.
- The sheet pan (or mold for white bread) can be loaded vertically on the flipper. Therefore, the vertical type proofer can be installed at the narrow width place. (it needs the enough height.)
- You can utilize the advantages for high height, and the elevator is used.

※ The specifications in this catalog are subject to change without notice. 20160501B①1,000



**MISUZU KOKI CO., LTD.**

Headquarters 530Kitagomizuka Kusu-Cho Yokkaichi-City Mie 510-0103 Japan  
 TEL 81-59-397-3211 FAX 81-59-397-3217  
 Tokyo Sales Office 3Fl., Daimon KS Bldg., 1-2-1, Shibadaimon Minato-Ku, Tokyo 105-0012 Japan  
 TEL 81-3-3434-2936 FAX 81-3-3434-2939  
 Osaka Sales Office 5Fl., Minami Senba Mizorogi Bldg., 2-10-20 Minami Senba Chuo-ku, Osaka-City Osaka, 542-0081 Japan  
 TEL 81-6-6241-1091 FAX 81-6-6241-1093

<http://www.misuzukoki.jp>  
 E-mail: [info@misuzukoki.co.jp](mailto:info@misuzukoki.co.jp)

